

# SyteLine Tax Interface

## Benefits

- Extend the value of Infor SyteLine.
- Manage tax compliance across multiple countries, providences, states, counties and cities.
- Maintain a reliable audit trail.
- Automate a process which can be tedious and time consuming.

## Manage Tax Compliance Issues

Single Source Tax Interface extends the value of Infor ERP SyteLine. It performs all aspects of the tax compliance process, including billing, collections, remittance and audit trail maintenance. It seamlessly integrates with Infor ERP SyteLine.

Managing tax compliance across multiple countries, states, providences, cities and counties can be a tedious and time consuming process. If compliance issues are not managed properly, the results can have serious repercussions. In addition to incorrect invoices, late payments and disgruntled customers, the company may be facing government fines and costly audits. This can all be avoided.

The Infor SyteLine ERP SyteLine Tax Interface provides a seamless interface between Infor ERP SyteLine and tax managements systems from Independent Systems, Taxware, Vertex or Quantum. These tax management systems and the SyteLine Tax Interface work together to streamline the sales tax compliance process reducing administrative costs, improving customer satisfaction and minimizing compliance risks.



**Proper management of tax compliance issues prevents tax-related fines or audits which can be costly and time consuming.**

## Features and Functions

- Calculate taxes using the tax software system and report them in SyteLine.
- Calculate "What-If" tax situations without affecting posted transactions.
- Calculate taxes on a line-by-line level, if needed.
- Include tax parameter and customer tax exemption maintenance.
- Provide tax exemption reporting.
- Interface directly with the tax systems' GeoCodes and Sales Tax APIs.
- Customize to suit individual needs.

## Calculate taxes on the following invoicing functions:

- Customer Order Invoices
- Customer Order Credit Memos
- Customer Order Price Adjustment Invoices
- Project Invoices
- SRO Invoices (FS-Plus)
- Service Contract Invoices (FS-Plus)
- A/R Invoices
- A/R Credit Memos
- A/R Debit Memos

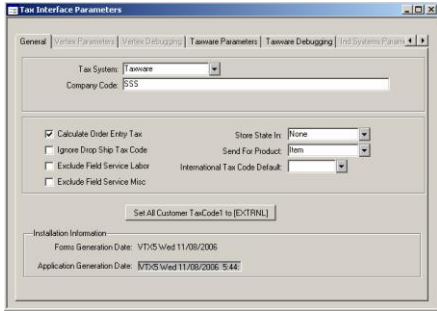


9003 Technology Lane  
Fishers, Indiana 46038

phone 317.596.3000

fax 317.596.3001

[www.singlesrc.com](http://www.singlesrc.com)



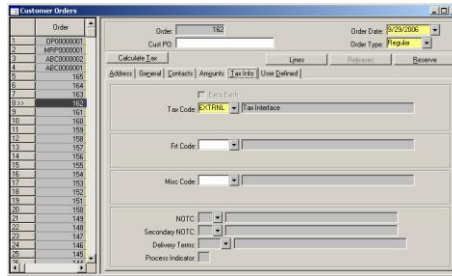
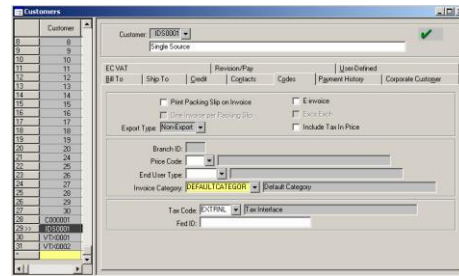
**Works with Three Different Sales & Use Tax Software Systems**

Infor ERP SyteLine Tax Interface can integrate with a choice of three different tax software options: Independent Systems, Vertex or Taxware. The screen shot to the left shows the setup options for the Taxware system.

*NOTE: Only Transactions with the tax code "EXTRNL" will be processed by the interface.*

**Customer-Specific Configuration**

Setup the Tax Interface to function on a customer by customer basis. By setting the Tax Code to "EXTRNL" at the customer master level, this value will be defaulted on each new order created.



**Customer Order Entry**

Override capabilities at the Customer Order level enable external tax calculations to be performed even if the Customer is not configured for tax interface processing by default.



**Experienced Infor solution partner**

*For over 15 years, Single Source has developed software solutions to integrate with Infor ERP SyteLine. As a result, Single Source possesses SyteLine expertise that is second only to Infor's internal staff. This provides reassurance that the Single Source Productivity Tools tightly integrate with SyteLine for a seamless solution.*

**About Single Source**

Established in 1985 as an information technology consulting and software development company, Single Source develops and supports software designed to improve operational efficiencies for mid-sized manufacturing organizations. Customers attest to unmatched levels of support, including phone support, product enhancements, service packs, web-based support, training, consulting and custom software development services. Single Source is a Microsoft Gold Certified Independent Software Vendor (ISV) and serves more than 600 SyteLine customers worldwide helping them improve efficiencies and maximize profitability.



9003 Technology Lane  
 Fishers, Indiana 46038  
**phone** 317.596.3000  
**fax** 317.596.3001  
**www.singlesrc.com**